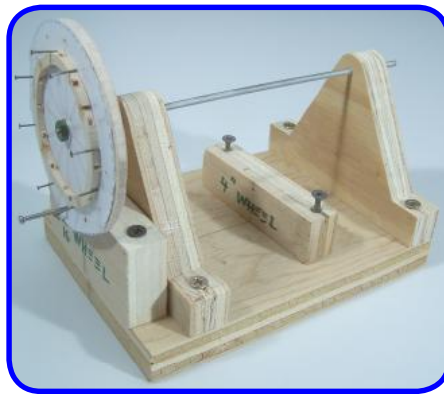
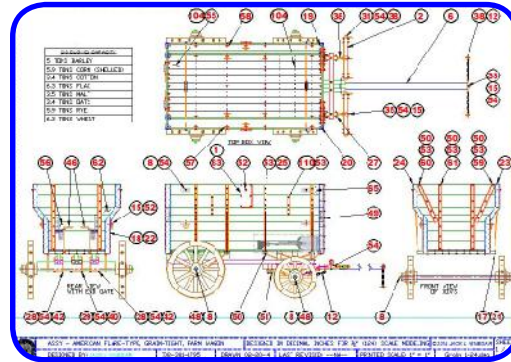


Grain-Tight, Flare-Type American Farm Wagon

Flare-Type, Grain-Tight Wagon Plan-Set consists of:

- Assembly Sheets
- Box Details
- Construction Instructions
- Grain Elevator Schematic
- Lazy Back Spring Seat
- Material List
- 3-D Renderings of:
 - Evener
 - Trailer Hitch
 - Running Gear
- Super detailed dimensioned optional items
- Step
- Tool Box
- Trailer Hitch
- Wheel Fixture
- Wheel Construction



The “Flare-Type” Wagon is a variation of the boxes found on American Farm Wagons. This type of box became popular as the use of mechanical corn pickers became available. (Around 1850 “modern” American inventors started developing mechanical corn pickers and by 1900 their designs would be recognizable today.)

Running gear shown are clipped (attached) with bracing at all stress points to avoid breakage and misalignment. The front gear has a large, steel, full-circle 5th Wheel, making for a solid unit to prevent tipping and excessive rocking. The hind gear has long hounds to assure “true tracking.” Both front and hind bolsters are “well ironed” (reinforced). John Deere advertised their Grain-Tight Wagons contained over 250 nuts and bolts. The following model also has almost 500 Nuts, Bolts, Washers and rivets.

A well built, heavy-duty or mountain-type Grain Wagon would have oak hubs, oak or hickory spokes, oak felloes and brakes. This design has up-and-down tie rods securing the box to the bed. Adjustable chains and rods were used to prevent the sides from spreading under load. Box ends and sides are cleated and riveted also with tie rods.

The Spring Seat and foot board were extra cost items when a farmer purchased such a wagon.